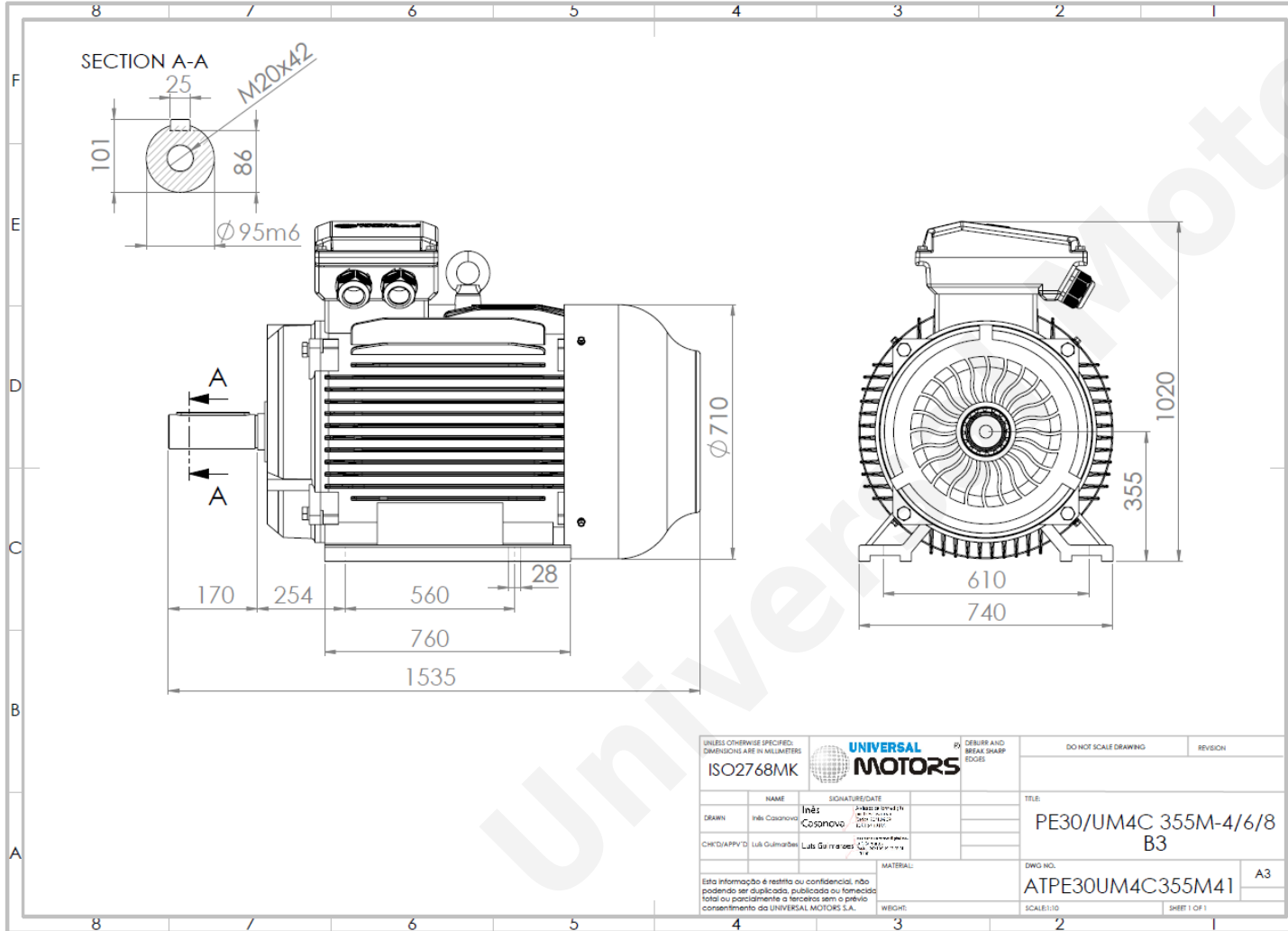




TECHNICAL DATA

Three Phase Electric Motors - Cast Iron Frame
 PE30 355 M 4 IE3
 250 kW / 340 Cv
 1490 RPM



Motor type:	PE30 355 M 4 IE3
Output:	250 kW / 340 Cv
Speed (min ⁻¹):	1490 RPM
Frequency:	50 Hz
Voltage:	400 V
Current:	418 A
Power factor (Cos Ø):	0.90
Poles:	4
Insulation class:	F
Temperature rise Class:	B
Efficiency 50%:	95.0 %
Efficiency 75%:	95.9 %
Efficiency 100%:	96.0 %
Torque:	1602 N.m
Tstarting/Tnominal:	2.0
Istarting/Inominal:	7.1
Tmaximum/Tnominal:	2.2
Noise:	84 Db(A)
Weight:	1630 Kg
Bearing DE:	NU 322
Bearing NDE:	6322 C3

UNLESS OTHERWISE SPECIFIED, DIMENSIONS ARE IN MILLIMETERS		UNIVERSAL MOTORS		DEBURR AND BREAK SHARP EDGES		DO NOT SCALE DRAWING		REVISION	
ISO2768MK									
NAME	INês	SIGNATURE	DATE	TITLE					
DRAWN	Luís Casanova			PE30/UM4C 355M-4/6/8					
CHECKED/APP'D	Luís Guimarães			B3					
MATERIAL:				DWG. NO.					
				ATPE30UM4C355M41				A3	
Esta informação é restrita ou confidencial, não podendo ser duplicada, publicada ou fornecida total ou parcialmente a terceiros sem o prévio consentimento da UNIVERSAL MOTORS S.A.				WEIGHT:		SCALE:1:10		SHEET 1 OF 1	

Regime - S1

Altitude - 1000m

Environment Temperature - 40°C

CONTACTS:

UNIVERSAL MOTORS Tel: +351 252 299 080
 Rua de São Brás,745 Fax: +351 252 299 089
 4480-782 VILA DO CONDE Mail: geral@universalmotors.pt

* References applied only in the UK